

**VIDYASAGAR UNIVERSITY**  
**MIDNAPORE**

**COMMON ENTRANCE TEST FOR PG ADMISSION, 2019**

Question Booklet No. **1614656**

Full Marks : 200

Subject: **FISHERIES SCIENCE**

Question Booklet Series: **D**

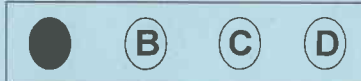
Subject Code No.: **16**

Answer all the questions. Each question has the same weightage.

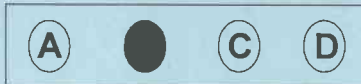
Read the following instructions carefully before you start answering.

**INSTRUCTIONS**

1. The question Booklet is printed in four Series e.g. (A), (B), (C) and (D). The candidate has to indicate the Series of the question booklet in the space provided in the OMR Answer Sheet . For example, if the candidate gets Series (A) booklet, he / she has to indicate on the front side of the OMR Answer Sheet with Black ink ball point pen only as indicated below:



2. There are 50 questions inside this question booklet. Immediately after you have been instructed to open this question booklet, ensure that any page / question is not missing / not printed / torn /repeated. In case you find any defect anywhere in the question booklet, immediately get it replaced by the Invigilator.
3. Each question carries 4 marks. 1(one) mark will be deducted for each wrong answer(negative marking).
4. Write your Form No and put signature in the space provided.
5. Before answering, write down the necessary information on the OMR Answer Sheet as per your Application Form and Admit Card in the specific space provided.
6. With each question you will find 4 possible answers marked by the letters A, B, C & D. Read each question carefully and find out which answer, according to you, is correct / most appropriate / best. Indicate your answer by darkening the appropriate circle completely in the OMR Answer Sheet corresponding to the question. For marking answers, use black ink ball pen only. If 'B' is the correct answer in a case, mark as below:



7. Do not fold or make any stray marks on the OMR Answer Sheet.
8. You can use the blank space of the last page for rough work. Do not tear it off from the Question Booklet.
9. After the examination has been over, you must submit OMR Answer Sheet to the Invigilator.
10. OMR Answer Sheet is designed for computer evaluation. If you do not follow the instructions given above and shown in the OMR Answer Sheet, it may make evaluation by computer difficult. Any resultant loss to the candidate on the above account shall be of the candidate only.
11. No candidate shall be allowed to use Mobile phone. Log tables or Calculator of any description in the examination hall / room.



15. The package used for packaging of frozen shrimp is  
(A) Tin can (B) Duplex cartoon (C) Drums (D) Aluminum can
16. The main objectives of National scheme for Welfare of Fishermen to provide basic amenities are:  
(A) Housing (B) Drinking water (C) Community hall (D) All of these
17. TMAO breaks down in to TMA immediately after death in  
(A) Murrels (B) Mulllets (C) Shrimp (D) Sardines
18. The Department of Ocean Development (DOD) was established in  
(A) 1961 (B) 1971 (C) 1981 (D) 1991
19. In India the best aquarium is located at  
(A) ZSI, Kolkata (B) Tarapur, Mumbai (C) Chennai (D) Vishakhapatnam
20. Role of Fisheries Co-operatives for fisheries development are:  
(A) To Provide Finance to the Member of Fishermen  
(B) To Motivate Fishermen to Organize Fisheries Co-operatives  
(C) To Provide Fish Seeds, Nets and Boating Materials, Inputs and Equipment  
(D) All of these
21. BOD test is an  
(A) Empirical test (B) Approximate test (C) Accurate test (D) All of these
22. Which of the following are abiotic factors of an aquatic ecosystem?  
(A) Temperature, rainfall, pH, nutrients (B) Temperature, rainfall, pH, food  
(C) Temperature, rainfall, pH, pathogen (D) Temperature, rainfall, pH, virus.
23. The community development program was launched in India in  
(A) 1950 (B) 1952 (C) 1954 (D) 1956
24. Enzyme that acts on myofibrillar protein during chilling  
(A) Calpain (B) ATPase (C) Carboxypeptidase (D) Adenylate kinase
25. Market at which buyers and sellers not aware of offers made by others and price of commodity will be change at different price, commonly known as  
(A) Imperfect market (B) Money market (C) Market profit (D) Perfect market
26. Which mode of sewage-fed fish culture is scientifically beneficial?  
(A) Single stocking with single harvesting  
(B) Multiple stocking with multiple harvesting  
(C) Single stocking with single or multiple harvesting,  
(D) Single or multiple stocking with multiple harvesting pattern
27. Primary lymphoid organ in fish is  
(A) Pituitary (B) Thymus (C) Bone marrow (D) Pancreas
28. Which of the following laws are implemented to restore the coastal environment?  
(A) Maritime Zones of India Regulation of Fishing by Foreign Fishing Vessel Act 1981.  
(B) The Coastal Regulation Zone Notification, 1991  
(C) Coast Guard Act, 1978  
(D) Marine Fisheries Regulation Acts, 1978

29. Nitrogen fertilizers are preferred as they are  
 (A) It is easily soluble in water  
 (B) Non toxic to organisms  
 (C) It does not have bad odours  
 (D) It is easily available in market and cheaper
30. The relationship between two or more variables is called  
 (A) Correlation (B) Co-efficient  
 (C) Binomial variable (D) Standard Deviation
31. Which one is the leading state in terms of inland fish production?  
 (A) Andhra Pradesh (B) Tamil Nadu (C) West Bengal (D) Gujrat
32. The best food for fry of *Catla catla* is  
 (A) Phytoplankton (B) Zooplankton (C) Rice bran (D) Wheat bran
33. Aerial traps are used for catching  
 (A) Murrels (B) Mulllets (C) Flying fish (D) All of these fishes
34. Anti-Nutritional factors are found in  
 (A) Soybean meal (B) Fish meal (C) Shrimp meal (D) Blood meal
35. The National fish of India is  
 (A) Indian major carps (B) Indian sardine (C) Indian mackerel (D) Indian shad
36. The concept of Extension Education process was developed by  
 (A) Wilson M. C. (B) Peter D.C. (C) J. Paul Leagans (D) Johnson R. L
37. The most frequently occurring value is called  
 (A) Mean (B) Median (C) Mode (D) Range
38. Foods with low pH values are more susceptible to spoilage by  
 (A) Protozoan (B) Fungi/Molds (C) Insects (D) Bacteria
39. Carrying capacity of the pond means  
 (A) The weight limit of fishes the pond can support  
 (B) Productivity of the pond  
 (C) Biomass of the pond  
 (D) Algal production of the pond
40. All of the following are characteristics of a hard bottom community except  
 (A) Rock or gravel substrate (B) All filter feeders  
 (C) Turbulent water (D) Organic rich sediment
41. Which is the leading countries for inland capture fisheries production per unit water area?  
 (A) Bangladesh (B) Vietnam (C) Sri Lanka (D) India
42. Which anchor is commonly used in inland fishing craft?  
 (A) Grapnel anchor (B) Mushroom anchor  
 (C) Delta anchor (D) CQR plough anchor
43. A fishermen village may consist of  
 (A) Not less than 10 houses (B) Minimum 05 houses  
 (C) Not less than 20 houses (D) Not less than 50 houses
44. Number of larval stages in *Macrobrachium rosenbergii* is  
 (A) 11 (B) 13 (C) 8 (D) 15

45. The Egyptians were probably the first in the world to culture fish as far back as:  
(A) 2500 B.C                      (B) 2000 B.C                      (C) 1500 B.C                      (D) 1000 B.C
46. Which fish act as scavenger?  
(A) Catla                      (B) Rahu                      (C) Silver carps                      (D) Magur
47. Which one is the non-components of National scheme for welfare of fishermen?  
(A) Development of Model Fishermen Villages  
(B) Personal medical facility  
(C) Group Accident Insurance for Active Fishermen  
(D) Training & Extension
48. Birds are indicator of  
(A) Heavy metal pollution                      (B) Oil pollution  
(C) Thermal pollution                      (D) Radioactive pollution
49. Which is the direct method for age and growth determination of fish?  
(A) Petersen method                      (B) Integrated method of Pauly  
(C) Length Frequency method                      (D) Tagging or Marking method
50. *Clostridium botulinum* is responsible for  
(A) Inflammations                      (B) Infection                      (C) Intoxication                      (D) All of these